



Thank you



Humidity



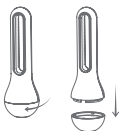
Temperature



Wireless Sync

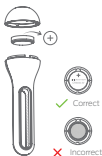
Getting Started

1



Unscrew and Remove cover in direction shown.

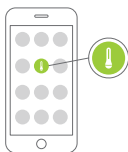
2



Place CR2450 battery into underside of device with positive side facing outwards. Then re-screw cover.

Check your battery position.

3



Launch App.

4



Launch App

Select available AirComfort. AirComfort will be shown as detected and listed within a few moments.

5



Voila! You can now enjoy using AirComfort.

Download APP



Download app by scanning QR code, or access below link



www.ibebot.com/apps

More Questions? FAQ



Scan QR Code for FAQ's or access below link

www.ibebot.com/faq-menu

Content



AirComfort



CR2450
Battery



User Manual



Carabiner

Specifications

Connectivity:	Bluetooth Low Energy (BLE) 4.0
Detection range:	10 metres (free field)
Battery Type:	Button cell CR2450 (changeable)
Battery life:	Minimum 12 months
Temperature sensor:	Range: -25°C to 45°C, Accuracy at 25°C: $\pm 0.5^\circ\text{C}$
Humidity sensor:	Range: 0% to 100%, Accuracy at 70%: $\pm 4.5\%$
Measurement interval:	5mins to 40mins adjustable
Data storage amount:	Up to 100 days
Dimension:	Max Diameter 35.8 mm, height 115.2 mm
Net Weight:	Approx. 35g
Wireless Specification:	Bluetooth (BLE) 2402-2480 MHz v4.0

Safety Instructions

Manufacturer does not assume liability for resulting damages to property or personal injury, if the unit has been misused and or damaged by improper use or failure to observe operating.

Instructions:

- The unit should be kept out of reach of children.
- Do not subject the unit to excessive force, shock, dust.
- Do not subject the unit to extreme temperatures.
- Do not immerse unit in water.
- Do not tamper with unit's internal components.
- Do not clean unit with abrasive or corrosive materials.
- Safe operation is no longer possible if device: No longer works / Shows visible damages / Is stored under unfavorable conditions for long periods of time / Is subject to considerable transport stress.

Cautions

Risk of explosion if battery is replaced by an incorrect type. Dispose of used batteries according to instructions or local regulations.

To reduce the risk of interference with other electrical equipment: Consult your doctor or device manufacturer if you have a pacemaker or other implanted electrical device.

Trademark

ibebot™ is registered in EU, Hong Kong and other countries.

Declaration of Conformity

iBebot Limited, declares that the provided sensor is in compliance with the requirements of Directive 2014/53/EU. FCC Caution: This device complies with part 15 of the FCC Rules.



A copy of the signed and dated Declaration of Conformity is available upon request.

Environmental Friendly Disposal

Old electrical appliances must not be disposed of together with residual waste, but have to be disposed of separately. The disposal at the communal collecting point via private persons is for free. The owner of old appliances is responsible to bring the appliances to these collecting points or to similar collection points. With this little personal effort, you contribute to recycle valuable raw materials and the treatment of toxic substances.

Contents of this manual are not to be reproduced without permission of the manufacturer.



Also Available

SoilQuality

Soil moisture & Nutrient Sensor



Soil
Moisture



EC



Wireless
Sync

Dashboard +

Desktop and Tablet



Charts



VPD



Mold Risk

iBebot Hub

Access data anytime, anywhere



Plug
Specific



Sync
Sensors



Sync to
Cloud

www.ibebot.com